

Certificate of Analysis

Date: 2024-11-02 15:51:42 -05:00
 Serial: LL030490
 LightLab: Devils Lettuce Test Lab
 Operator: Adriel
 Sample ID: DLT-0781-BY5Q
 Method: LightLab HPLC
 Test Type: Plant
 Weight / Volume: 0.303 g
 Solvent: 30 ml
 Temperature: 27.8 °C
 Notes:

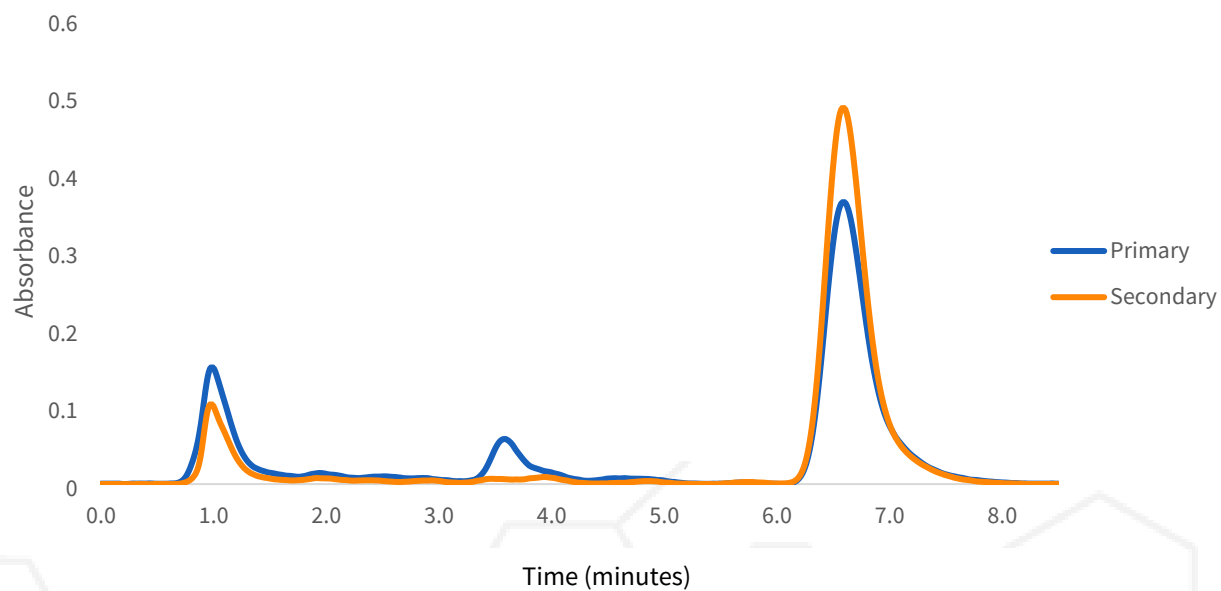
Cultivar: BLUEBERRY MUFFIN
 Moisture: 8.7%
 Col Tests Remaining: 3
 CoA Revision: 0
 Calibration Exp: 2025-03-14
 Product: Flower
 SKU:
 Batch:

Cannabinoid Profile

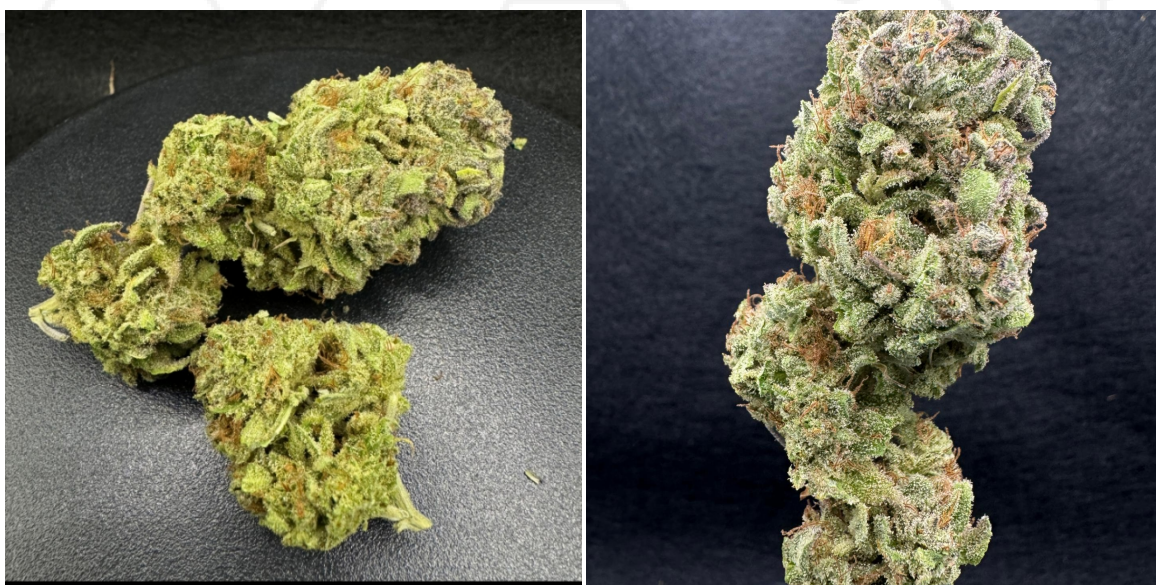
Analyte	%	LOQ
THC-A	23.9	0.54
Δ9-THC	ND	0.54
CBD-A	ND	0.54
CBD	ND	0.54
CBG-A	ND	0.54
CBG	ND	0.54
CBN-A	ND	0.54
CBN	ND	0.54
CBC-A	1.4	0.54
CBC	ND	0.54
Δ8-THC*	ND	4.3
THCV-A	ND	0.54
THCV	ND	0.54
Terpenes	Medium	
Total THC	20.9	
Total CBD	ND	
Total Cannabinoids	25.3	

ND = Not Detected; n/a = Not Analyzed; LOQ = Limit of Quantification; Total THC = (0.877 x THC-A) + Δ9-THC; Total CBD = (0.877 x CBD-A) + CBD. * Δ8THC has lower precision and higher detection limit than other cannabinoids.

Chromatogram



Sample Images





Change History

Date	User	Action
2024-11-02 15:51:42 -05:00		Test Recorded
2024-11-02 16:15:40 -05:00	AS	Changed EdblProduct from "" to "Flower"
2024-11-02 16:15:42 -05:00	AS	Added an image
2024-11-02 16:15:52 -05:00	AS	Added an image
2024-11-02 16:16:35 -05:00	AS	Added an image
2024-11-02 16:20:58 -05:00		Generated a CoA (revision 0)



Scan for Authenticity

Approved

Date

The signatory confirms that the Operator has performed the sample preparation according to the LightLab User's Guide. This report is for quality assurance purposes only. These results relate only to the sample included on this report. Orange Photonics makes no claims as to the efficacy, safety, or risks associated with any detected or non-detected level of any compounds reported herein. Orange Photonics makes no claims regarding the adherence to sample preparation guidelines, by the operator, as outlined in the LightLab User's Guide.